

Additional Benefits

LIGHT COMMERCIAL USE for your full-time or part-time employment, trade or business, is permitted only if you have chosen and paid, at the time of sale, the appropriate surcharge in Box 3 on the front of the agreement to make your vehicle eligible for coverage.
(See "What Is Not Covered" for examples of commercial use that are not covered.)

CAR RENTAL ALLOWANCE In the event of a mechanical breakdown of a covered component you may be eligible for substitute transportation reimbursement. Such expense shall be limited to actual per day cost up to \$35.00 per day, a 10 day maximum, not to exceed \$350.00 per occurrence. To qualify for the first day's reimbursement, the covered vehicle must be retained by the repairing facility overnight and the covered repair must exceed a minimum of four (4) hours labor, as defined in the current year's manufacturer's or accredited flat rate repair manuals.

An additional day will be reimbursed for each additional eight (8) hours labor. The substitute vehicle must be rented from the repair facility, or from a licensed rental agency. Reimbursement of substitute transportation shall not continue beyond the day on which the repairs are completed and the customer is notified of completion. Rental receipts are required for reimbursement.

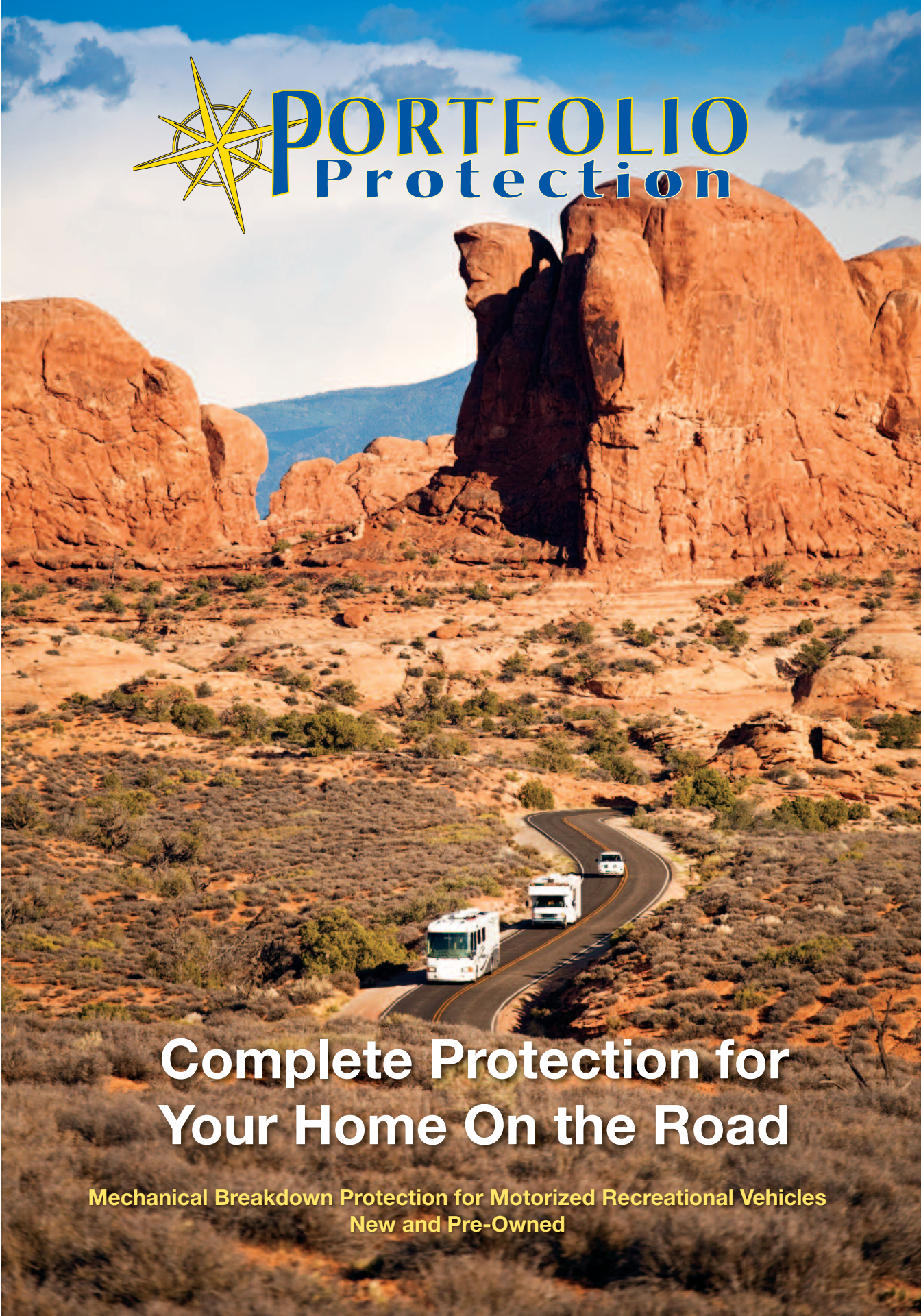
TOWING REIMBURSEMENT In the event towing is required because of a breakdown of a covered component, towing costs not payable by insurance will be covered up to \$350.00

LODGING If you are more than one hundred (100) miles from home and repair to a covered component requires eight (8) hours of labor (must be an overnight repair), you may be eligible for lodging reimbursement, not to exceed \$60.00 per night, a four (4) night maximum and no more than \$240.00 per occurrence.

SERVICE CALLS Only in the event of a breakdown of a covered component and in addition to the normal parts and labor charges, you are eligible to be reimbursed up to \$75.00 per occurrence for a remote service call. This cannot be combined with the towing reimbursement.

Refer to your extended service agreement for all details of your benefits.
Have your extended service agreement in hand prior to calling our toll free number for roadside services or claims.

CLAIMS TOLL FREE 1.800.527.3426



Complete Protection for Your Home On the Road

Mechanical Breakdown Protection for Motorized Recreational Vehicles
New and Pre-Owned

THE COMPLETE HOME FOR THE ROAD NEEDS COMPLETE PROTECTION



Your motor home gives you so much freedom and pleasure, and saves you money on travel accommodation costs.

Invest a little bit of that savings to help keep your home on the road moving toward your next destination.



PROTECT YOUR MOTOR HOME FROM THESE UNEXPECTED REPAIR AND REPLACEMENT COSTS

Component System	Gas Motor Home	Diesel Motor Home
Engine	\$9,400	\$24,000
Transmission	\$4,200	\$9,000
Rear Axle	\$2,400	\$4,200
Refrigerator	\$2,400	\$3,000
Air Conditioning	\$2,600	\$2,600
Generator	\$4,000	\$7,200
Alternator	\$350-\$600	\$450-\$850
Leveling Hydraulics	\$1,800	\$2,400

The costs above are representative potential repair costs that can be expected over the duration of your ownership. Actual costs will vary by make and model.

Complete Exclusionary Coverage

(PLAN B)

It's like extending the factory warranty on all the motor vehicle components AND the home comfort systems in your motorized recreational vehicle. It's the best coverage available anywhere to protect your home on the road. Portfolio Exclusionary Protection includes all the components listed below, and even more. We call it Exclusionary Coverage because it's easier to list the items not covered than everything that is covered.

What is not covered?

- **Routine maintenance items** such as: oil, coolant, fluids, refrigerant and others.
- **Items that occasionally need replacement** such as: battery and cables, lights and bulbs, tires, brake pads, brake drums, brake shoes, exhaust system, shock absorbers, and strut insert cartridges.
- **Appearance concerns and exterior items** such as: bright metal, vinyl, wheel covers, ornaments, and paint.
- **Interior items** such as: upholstery, buttons, carpet, door and window handles

(see service agreement for complete list of what is not covered)

Here's What Your Exclusionary Service Agreement States: Exclusionary Coverage

Plan B Exclusionary Coverage provides all the Plan A and Upgrade Options coverage listed below and also provides coverage for repair/replacement of ALL factory-installed original mechanical equipment on the Covered Vehicle except those items listed under "What Is Not Covered."



Comprehensive Stated Coverage

(PLAN A)

Protect the Motor Vehicle Components...

ENGINE - Gasoline: All internal lubricated parts: Bearings, pistons, piston pins and rings, valves, valve springs, valve spring retainers, timing chain or timing belt tensioners and rocker arms. Timing gear, oil pump, valve guides, followers, valve seats, rocker shafts, push rods, valve lifters, connecting rods, crankshaft and main bearings, camshaft, cam bearings and rocker bushings. Other parts: Water pump, engine mounts, engine cushions, exhaust manifold, intake manifold, front cover, harmonic balancers, vacuum pump, flywheel (flexplate), flywheel ring gear, pulleys and eccentric shaft; seals and gaskets. Engine block, cylinder head(s), cylinder barrels, oil pan and valve covers only if the damage results from the failure of an internal lubricated part. **Diesel Engine:** All of the above parts plus fuel heater, fuel injection pump and fuel injectors. **Turbo Charger:** All internal lubricated parts contained within the turbo charger housing, and the turbo charger housing only if the damage results from the failure of an internal lubricated part.

TRANSMISSION (Automatic or Manual) - All internal lubricated parts; torque converter, pump, drums, reaction carrier, shafts, hubs, gears, shift rails and forks, internal linkage, and bearings. Transmission mounts, vacuum modulator; seals and gaskets. The transmission case, housing and oil pan, only if the damage results from the failure of an internal lubricated part.

TRANSFER CASE - All internal lubricated parts, plus the transfer case housing only if the damage results from the failure of an internal lubricated part; seals and gaskets.

DRIVE AXLE ASSEMBLY (front or rear) - All internal lubricated parts contained within the drive axle housing; hub, axle and non-serviceable bearings, drive gears and clutches. Constant velocity joints, universal joints, axle shafts, drive shafts; seals and gaskets. The axle or transaxle housing, only if the damage results from the failure of an internal lubricated part.

ENGINE COOLING/HEATING - Water pump including: Impeller shaft, bearings and bushings. Radiator, heater core, thermostat, fan, fan clutch, fan motor, controller module, coolant recovery unit, fan shroud, electric block heater; seals and gaskets.

FUEL SYSTEM - Fuel pump, fuel injector pump, fuel injectors, fuel distributor, fuel tank(s), metal fittings, metal fuel lines, fuel pressure regulator, vacuum assist booster pump and auxiliary tank switch; seals and gaskets.

SUSPENSION - Upper and lower control arms, king pins, control arm shafts and control arm bushings, spindle, spindle supports, coil and leaf springs, torsion bars, stabilizer shaft links or bushings, strut bar, rod or link, steering knuckles, wheel bearings, strut and strut bushing (except strut cartridges), leveling compressor, relays, height sensors, compressor lines and air bags.

STEERING - All internal lubricated parts contained within the steering box. Rack and pinion gear, power steering pump, power cylinder assembly, pitman arm, idler arm, steering column, bearings, tie rod(s), drag link, center link, steering damper, control valve and cylinder, cooler, cooler lines, main and intermediate shaft and coupling; seals and gaskets.

BRAKES - Master cylinder, power brake cylinder, vacuum assist booster, booster pump, wheel cylinders, disc brake calipers, combination valves, equalizer valve, hydraulic control unit, backing plates, rear actuators, springs, clips, retainers, self adjusters, parking brake linkage and cables, hydraulic lines and fittings; seals and gaskets. **Air Brakes:** The compressor, tank, auto bleeder valve, diaphragm, treadle, slack adjusters, disk calipers and compensating valve; seals and gaskets.

AIR CONDITIONING (DASH) - Condenser, compressor, clutch and pulley, evaporator, receiver dryer, accumulator, blower motor, blower motor fan, HVAC controller and module; seals and gaskets.

ELECTRICAL - Generator or alternator, voltage regulator, starter motor, starter solenoid, starter drive, relays and solenoids. Battery paralleling switch, battery isolator, back up alarm and switch, distributor assembly and factory installed power converter/inverter. Front and rear wiper motors, front windshield defroster, power mirror motors, power seat motors, power door lock actuators and solenoids, power window motors and regulators and power antenna motor. Turn signal switch, horn(s) and horn switch, cruise control

and dashboard clock. Manually operated switches, amp/volt gauge, oil pressure gauge and sending unit, temperature gauge and sending unit. Breaker box(es), breakers and wiring harnesses for covered components (excluding power cord).

ELECTRONIC HIGH TECH - Fuel injection sensors, fuel injection control module and injectors, electronic ignition module, electronic mixture control unit and sensors, digital or analog instrument cluster, electronic anti-detonation sensors and controller, electronic anti-lock brake computer, actuator and wheel speed sensors.



...and the Home Comfort Systems

WATER SYSTEM - Water pump, sink(s), sink faucet, shower faucet, shower head, holding tank(s), and their traps, fittings, connections and gate valves.

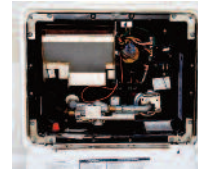
WASTE SYSTEM - Toilet vacuum breaker, float assembly, ball valve, slide valve, the water inlet valve, the holding tank, and their traps, fittings, connections, and gate valves.

HOT WATER HEATER - Burner assembly, tank, thermostat, thermocouple, heating element, gas valve, pressure relief valve, electronic ignition, wiring harness, switch and the PC board, and their fittings, connections, and gate valves.



L.P. GAS SYSTEM - Regulators, valves, gauges, pigtailed, fittings, connectors, gas lines, automatic shut off and mounting brackets.

HEATING/FURNACE - Thermostat, thermocouple, main gas valve, igniter, burner assembly, igniter, blower motor, fittings, connections, and the PC board.



RANGE/OVEN - Burner assembly, thermostat, thermocouple, burner valves, igniter, heating element, fan, pole motor, power hood, fittings, connections and the PC board. The following components of the Microwave oven: transformer, magnetron, fan and the PC board

AIR CONDITIONING (roof mounted 110v or Central Air) - Compressor, condenser, evaporator, receiver-dryer, accumulator, expansion valve, capacitors, heat pump, heat strips, reversing valve, relays, blower motor, blower motor fan, high/low cut off switch, pressure cycling switch, electronic module, thermostat, vent fans.



FRAME - L.P. mounting bracket, bumper welds, all chassis frame welds, manual lift-jacks, latch and lift crank.

AUXILIARY GENERATOR - All internal lubricated parts including: pistons, rings, connecting rods and bearings, wrist pins, crankshaft and main bearings, camshaft and bearings, rocker arms, valves, valve springs, seats and guides, oil pump, timing chain/belt, tensioner and guides. Engine block, cylinder barrels and cylinder head only if the damage results from the failure of an internal lubricated part. Starter motor, electrical generator, manually operated switches, hour meter, voltage regulator, gauges, PC board and power converter/inverter. Breaker box(es), breakers and wiring harnesses for covered components (excluding power cord).



REFRIGERATOR/FREEZER Thermostat, thermocouple, burner assembly, igniter, cooling unit, fittings, connections and the PC board.



HYDRAULIC/ELECTRIC STEP(S) - Step motor, gears, linkage and switch.

Plus You Can Choose to Add Optional Coverage on Even More Components and Systems

PLAN A- UPGRADE OPTIONS (covered only if checked on page 1, Box 3 and required surcharge is paid at time of sale)

DELUXE APPLIANCE - Washer and Dryer: Drive motor, transmission, pulley, heating element, igniter, main controls, blower and water pump; **Dish Washer:** Drive motor, pulley, heating element and water pump; **Ice Maker:** Condenser, compressor, ejector motor, gears, bearings, thermostat and relays; **In-Sink Disposal:** Motor, flywheel, hammer, shredder and power switch; **Trash Compactor:** Compactor motor, compacting ram(s) and relays; **Central Vacuum Cleaner:** Electric motor, armature and relays; **Kitchen Center:** (Blender and Food Processor) Electric motor and the control switches; **External Barbeque:** Burner, igniter and the control valves; **Rear Camera and Driver Monitor;** **Factory-Installed Carbon Monoxide/Smoke Detector.**

HYDRAULIC/ELECTRIC LEVELING JACKS - Electric motor, pump, jack assembly, control switches, sensors, actuator, lines, fittings, connections, cylinders, worm gears, tracks, electric switch and wiring harness.

HYDRAULIC/ELECTRIC SLIDE OUT ROOMS - Electric motor, pump, jack assembly, control switches, sensors, actuator, lines, fittings, cylinders, worm gears, tracks,

electric switch and wiring harness. **THE SAME COMPONENTS ARE COVERED IN RAISED ROOF APPLICATIONS.**

ULTRA ELECTRONIC HI TECH - Electronic Entrance: Transmitter, touchpad, actuators, solenoids, servos and computer; **Thermometer, Compass and Power Seat Computer;** **Anti-theft:** Remote transmitter, audible device and relay.

WHEELCHAIR LIFT - Electro-hydraulic motor, hydraulic pump, power control switch, manual hand pump, pressure release valve, steel frame and frame welds, locking handrails, actuator and relays.

AUDIO/VIDEO - Television: (42" or less): Circuit boards, power supply, control panel, and the tuner; **A.M./F.M. Stereo and/or CD player:** Circuit boards, power supply, tuner assembly, and amplifier; **DVD:** Circuit board, power supply, and control panel.

MANDATORY SURCHARGE FOR FACTORY-INSTALLED NAVIGATION SYSTEM

Factory-Installed Navigation Systems are covered on either Plan A or Plan B only if the surcharge is checked in Box 3 on the front page of the agreement, and the surcharge is paid at time of sale.



Complete Protection for Your Complete Home

